



# BellaCrete

architectural concrete  
surface treatment systems

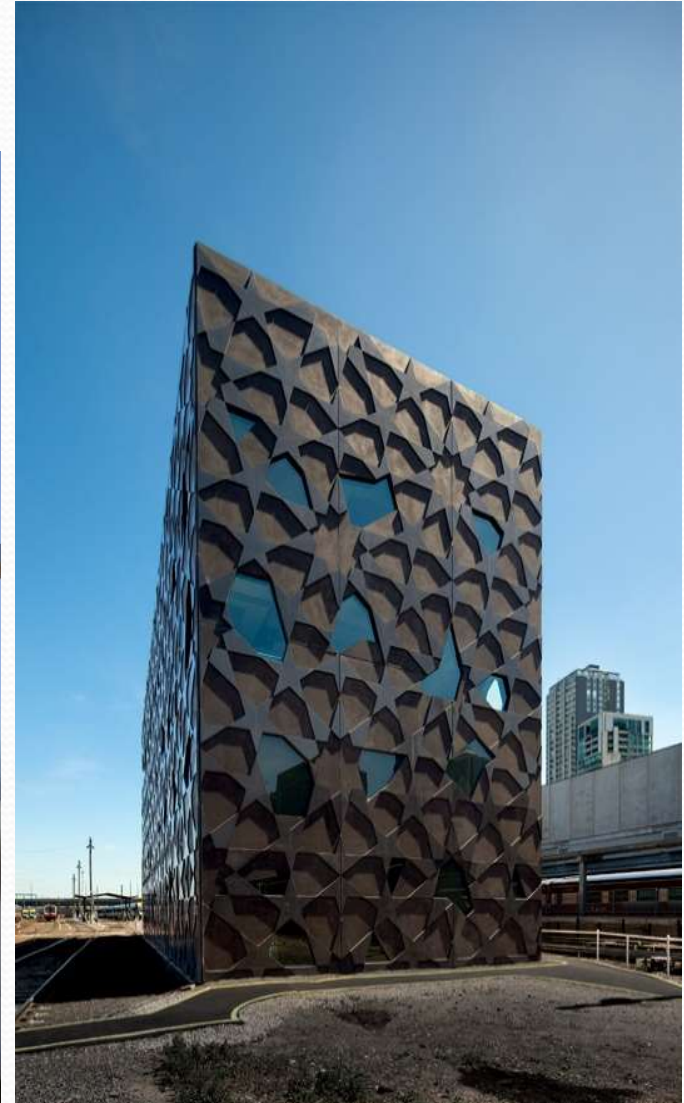
## TECHNICAL SPECIFICATIONS

**the perfect view provided  
by BellaCrete**





# other examples for civil/commercial buildings







## ***BellaCrete***

*allows concrete to have a beautiful surface finish, which increases the concrete panels' commercial value.*

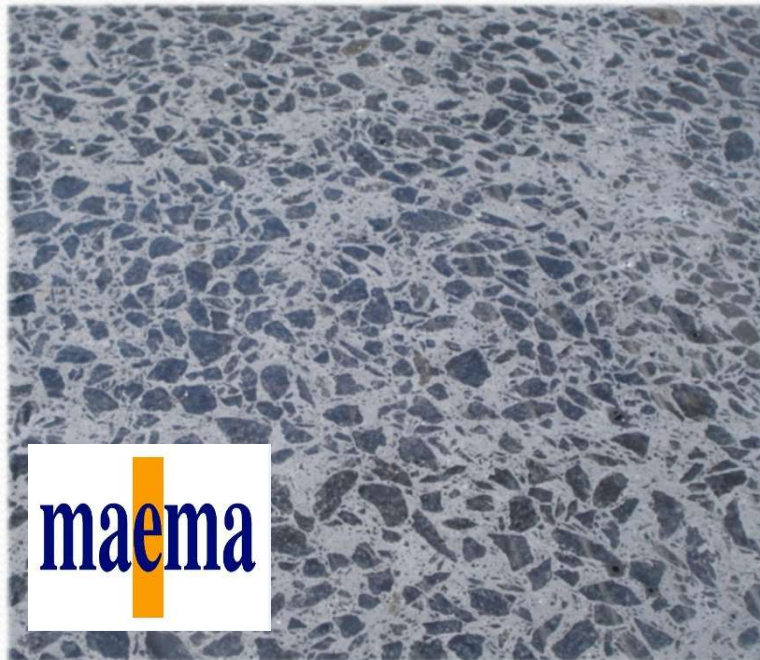
***with BellaCrete standard  
version you can reach  
different surfaces,  
changing only the tools on  
each head,  
as for example:***



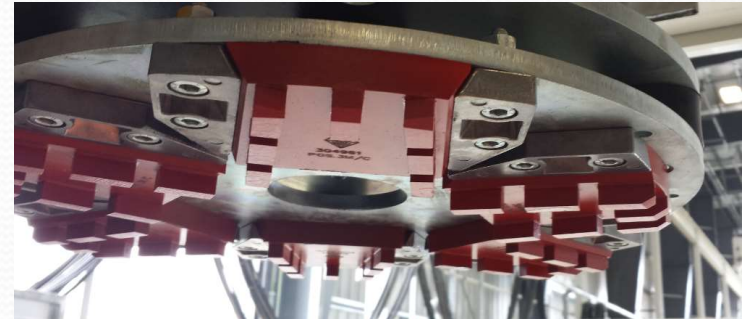
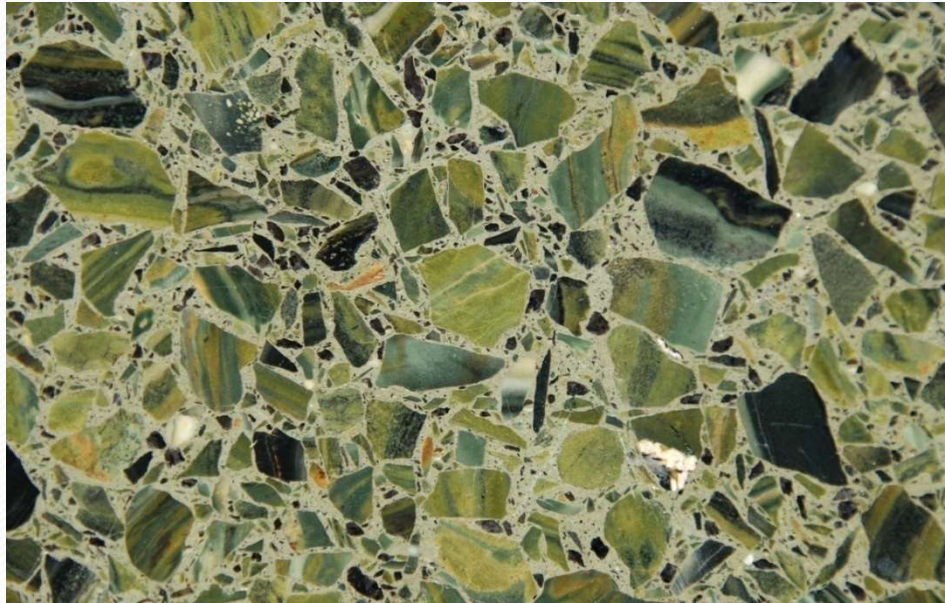




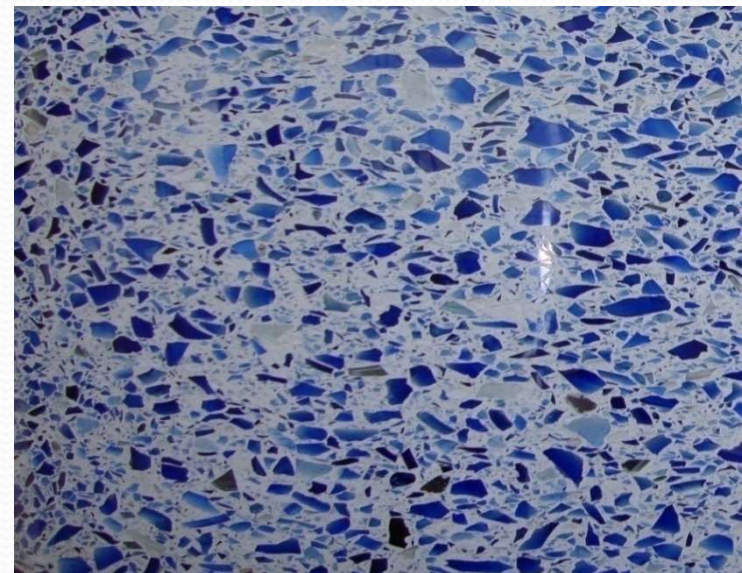
*smoothing*







*polishing*







# *brushing*





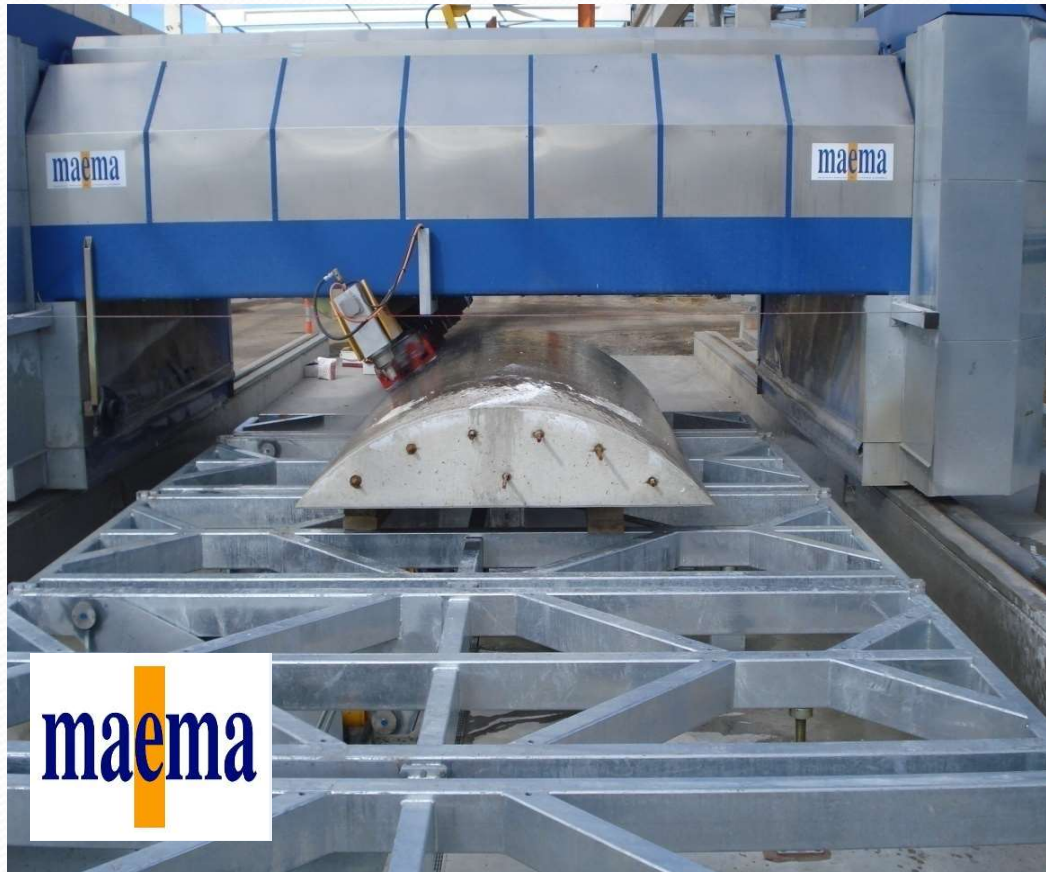


# ***bush-hammering***





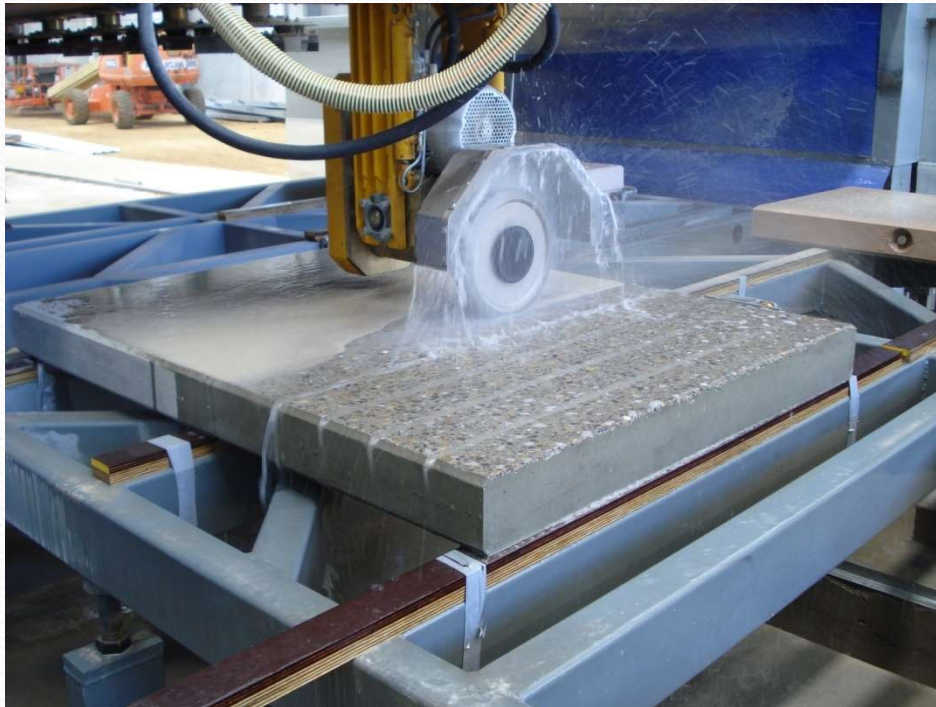
***BellaCrete can process  
also curved, concave  
and convex, panels***





## ***Snodo Big***

*flexible head, (alternative to the small one), necessary to reproduce tile floor effects, chamfer and thickness up to 800 mm (height)*





# ***Snodo Script***

*flexible head suitable  
for executing drawings  
and scripts*





## ***BellaCrete columns***

*this is a special machine for processing cylindrical and octagonal precast columns.*





# ***BellaCrete Space***

*it is a particular machine for processing the thickness and chamfers of concrete*







# Stepper

rough surfacing finishing  
system for blocks and paving

## TECHNICAL SPECIFICATIONS



# ***Blocks and Paving***

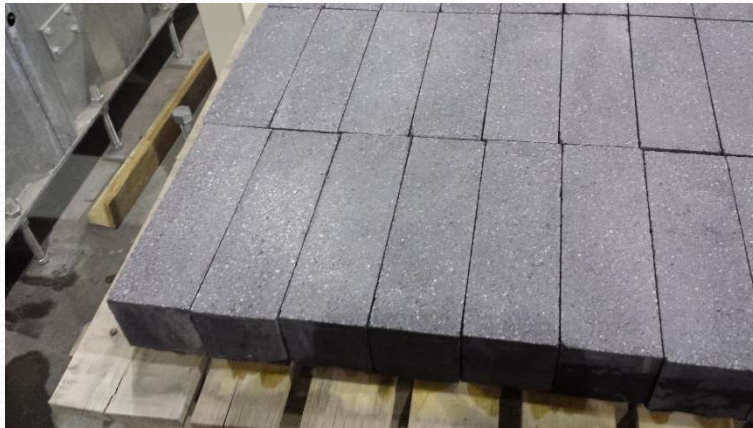
In the range of products of Maema,  
there is also a line specifically  
designed for the rough surface  
finishing of blocks and paving;  
we've called this solution  
Stepper





# Stepper: blocks and paving

*Loadable for pallet (multiple peaces)  
up to a pallet size of 1400 x 1400 mm*



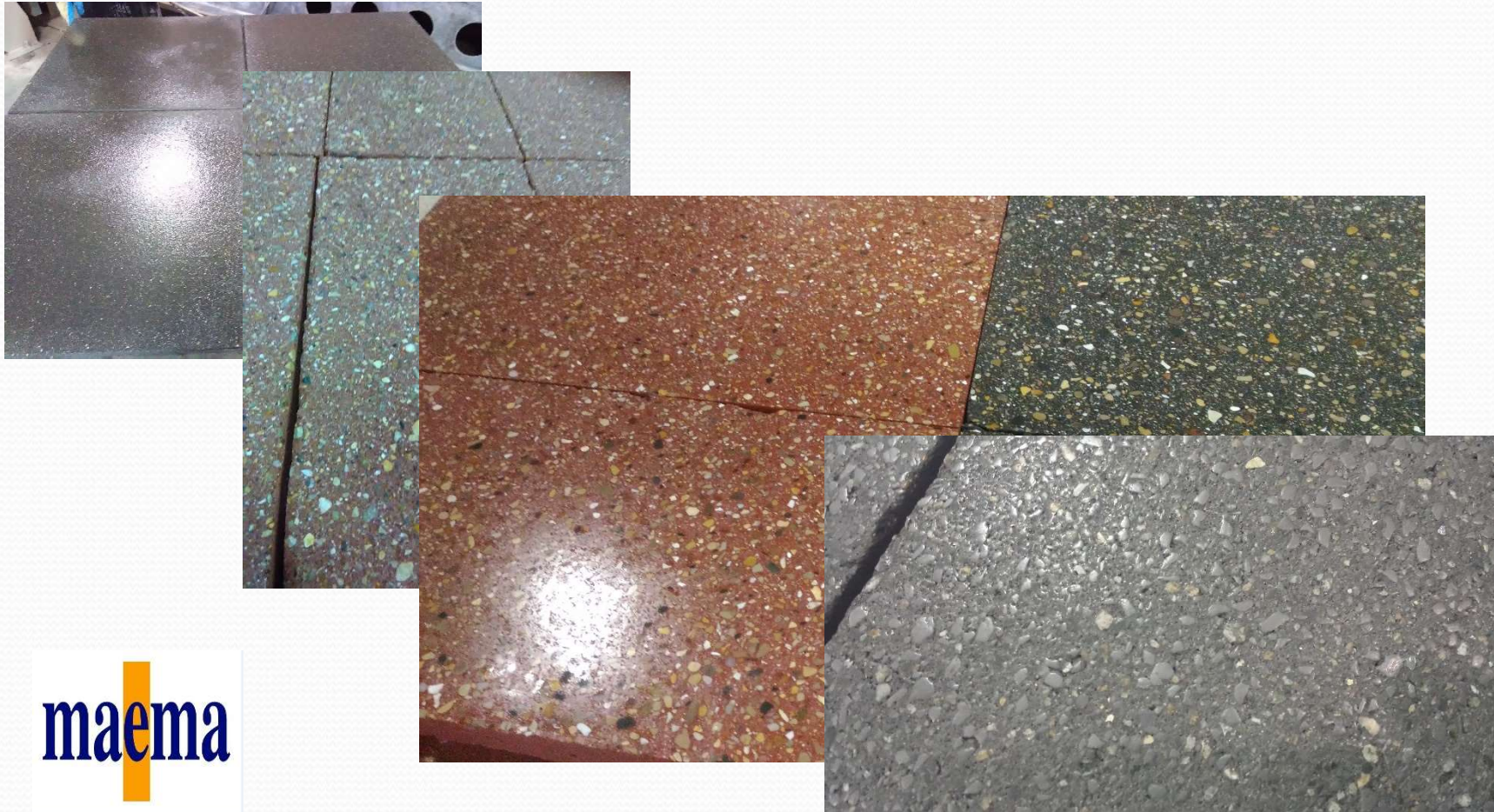
*Thickness from 25 up to 500mm*





# **Stepper**

*Mechanically produces beautiful finishes, which increases the commercial value.*



**maema**



## *Stepper: finishings*



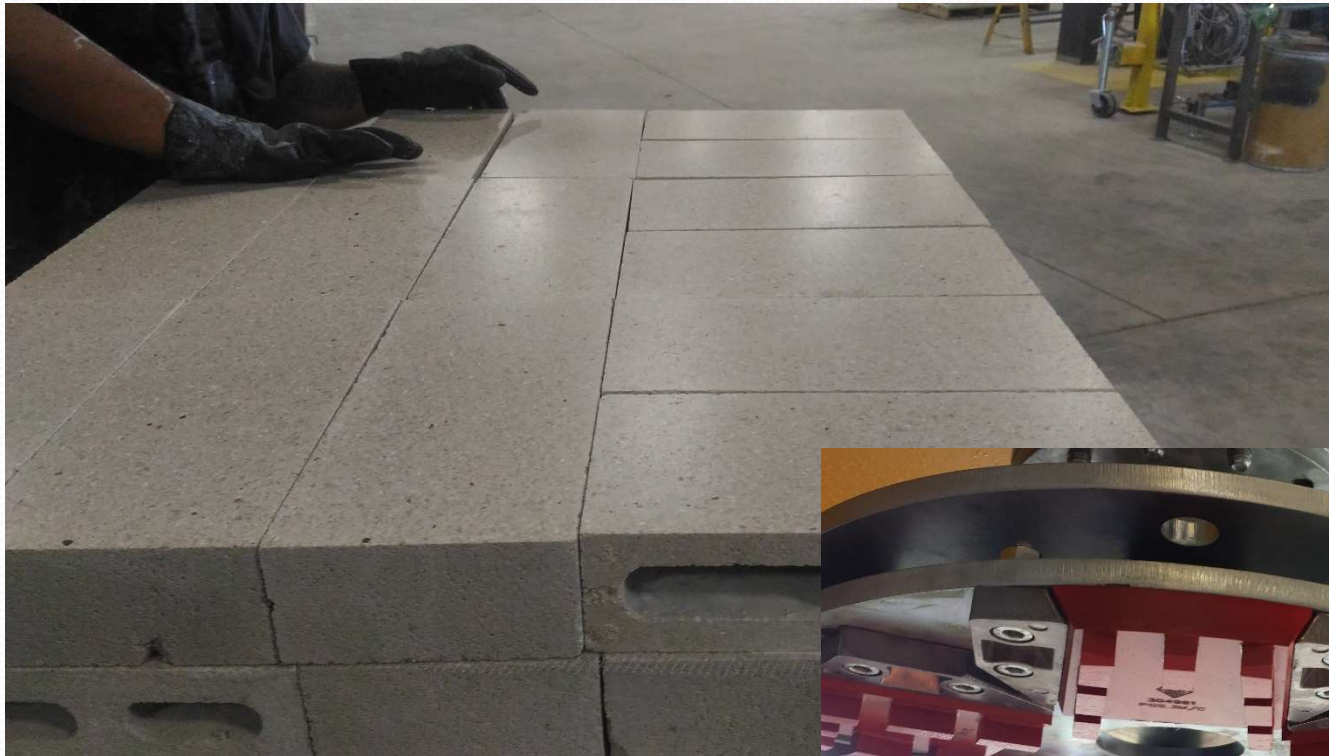
*Polishing*

*Got with a sequence of  
different abrasives*



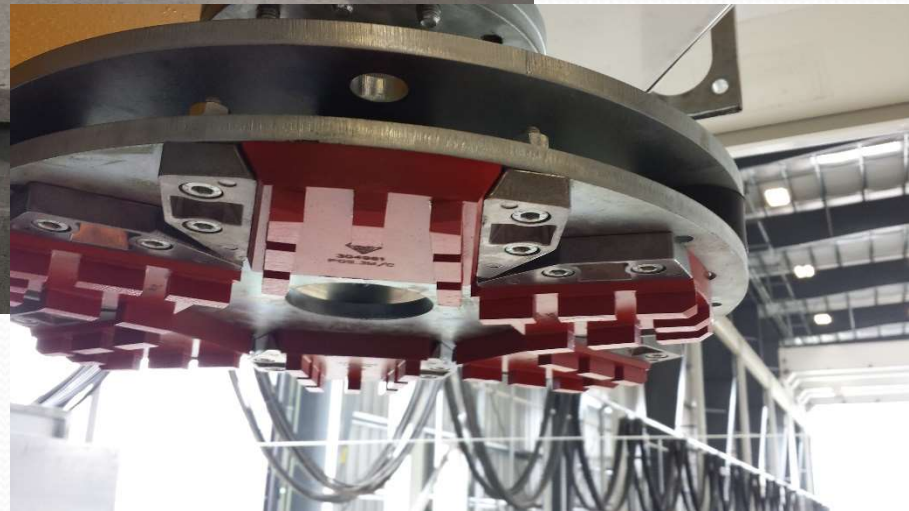


## *Stepper: finishings*



*Smoothing*

*Got with diamond tools*



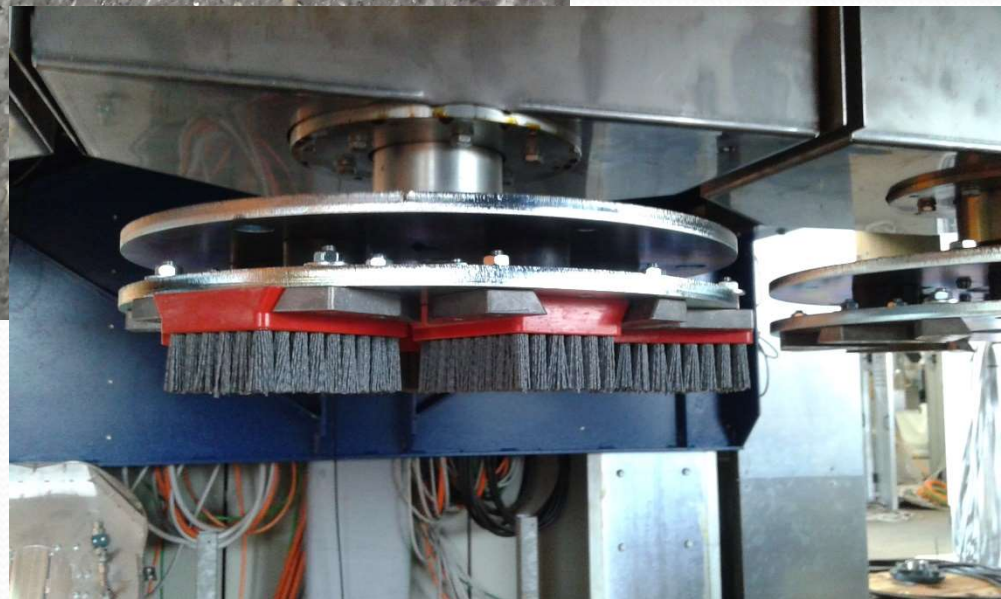


## *Stepper: finishings*



*Brushing*

*Got with a sequence  
of different brushes*





## *Stepper: finishings*



*Bush-hammering*



*Got with a roto Bush  
hammering tool*





## ***Stepper working concept:***

- *The components are transferred from station to station with a conveyor belt (up to 24 mts long)*
- *One or more machine modules are equipped with cross slides and bear two or three working heads each*





## *Stepper line*





# Stepper concept

## *Hight flexibility:*

- *From 3 up to 6 working heads (working stations)*
- *1 or 2 stations for loading/unloading*
- *1 or 2 intermedium stations available for production control or additional operations*





*Dedicated areas for  
loading and  
unloading for the  
possibility of fully  
automation  
(robot)*





## ***Stepper features: summary***

- ***Different types of finishing with the possibility to combine them***
- ***Production capacity from 1 up to 3 m<sup>2</sup>/minutes (depending from the type of finishing)***
- ***Expandability (from 3 up to 6 or more steps)***
- ***Big working area (from 25 up to 500mm in height) with possibility to work one set of components (up to 1400x1400 mm) at time***



***Bellacrete and Stepper  
the solutions for  
“concrete’s elements”  
developed by Maema***



***[www.maemasrl.it](http://www.maemasrl.it) – [info@maemasrl.it](mailto:info@maemasrl.it)***