

# BIANCHI

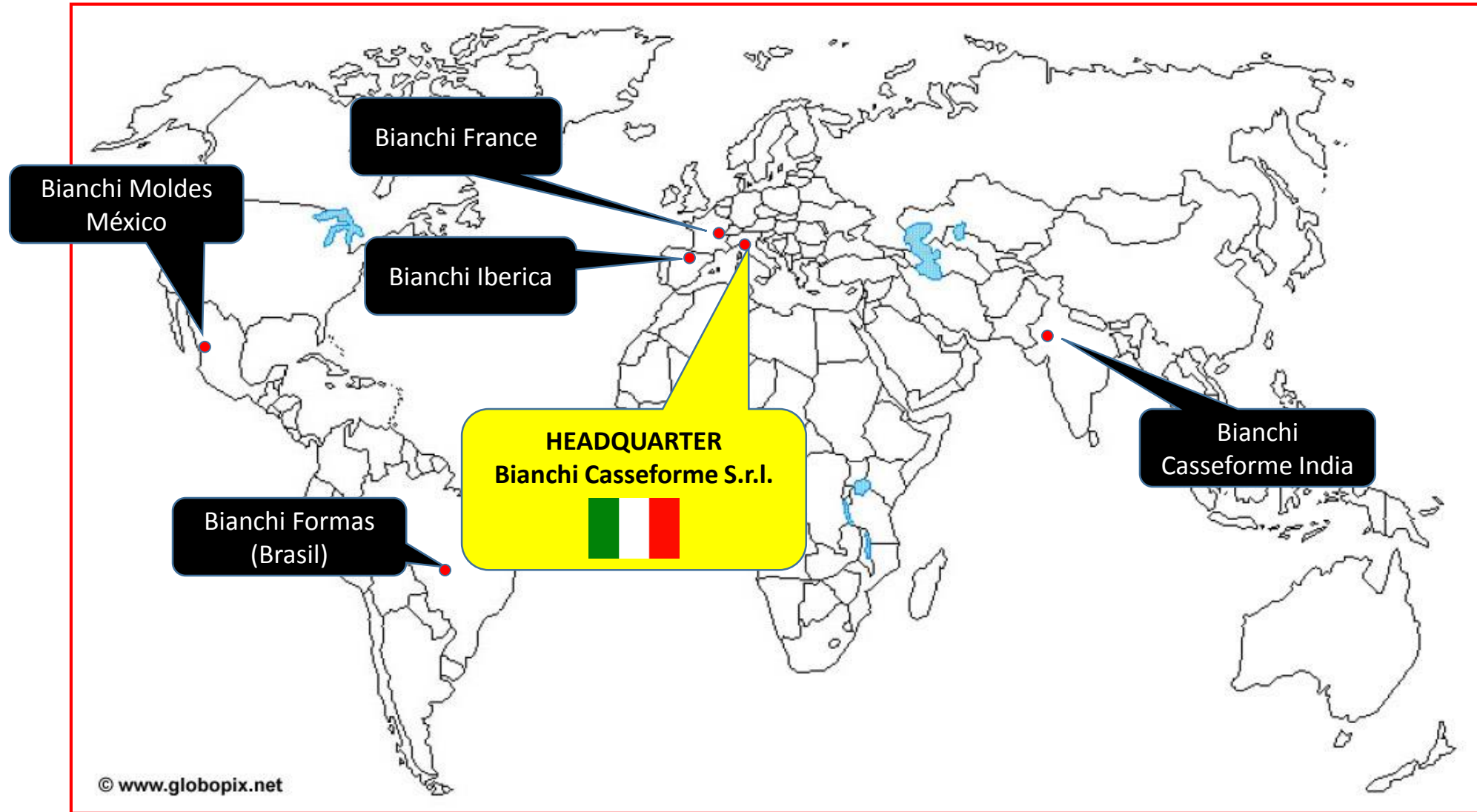
TECHNOLOGY FOR PRECAST



***YOUR PARTNER!!!***



# Bianchi: an international Group – Headquarter and Subsidiaries



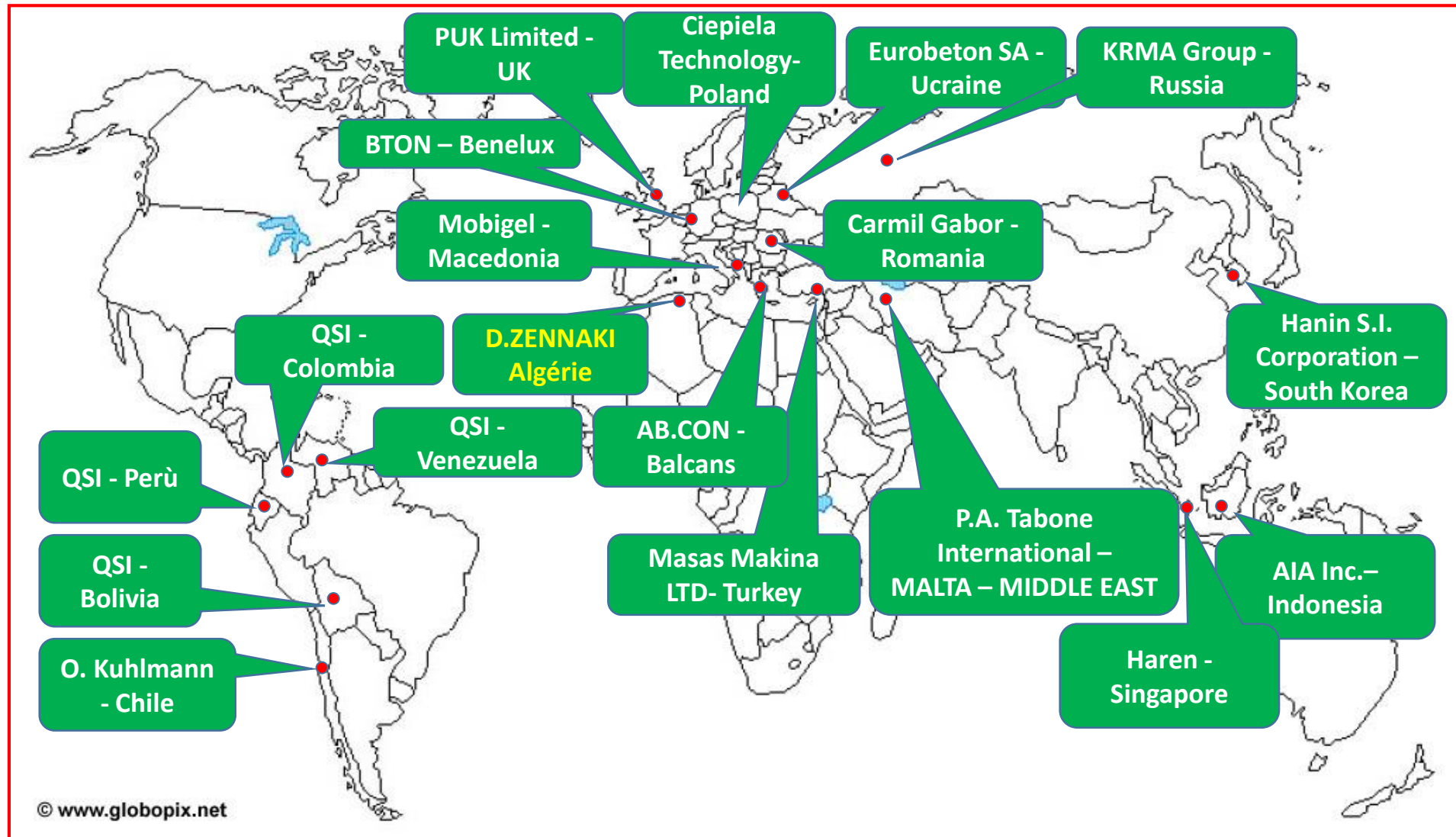
HEADQUARTER



**BIANCHI**  
TECHNOLOGY FOR PRECAST

SUBSIDIARIES

# Bianchi: an international Group – Agents and Representatives



AGENTS AND REPRESENTATIVES



**BIANCHI**  
TECHNOLOGY FOR PRECAST



# YOUR PRECAST PARTNER - SOLUTIONS & TECHNOLOGY

Founded in 1964, Bianchi Casseforme s.r.l. is present worldwide to serve the Precast Concrete Producers, with a complete range of products that include:

- Moulds for general precast elements
- Specialized moulds for Industrial, Residential and Commercial Precast production
- Concrete distribution machinery
- Continuous cycle production systems (Carousel Plants)
- Prestressing machinery
- Magnetic solutions
- Vibration equipment
- Lifting and fixing solutions.

All of our manufacturing facilities operate using a “Certified Quality Control System” UNI EN ISO 9001:2015.



# The factory in Fornovo di Taro (PR) - ITALY



Our headquarters are located in Fornovo di Taro near Parma, it covers an area of over 12,000 square meters, where all our products are designed and assembled, using all the latest technology.



All the moulds and machineries are made in our factory with new generation electronic controlled machines for cutting, bending and assembling.

# COMPLETE PROJECT DEVELOPMENT



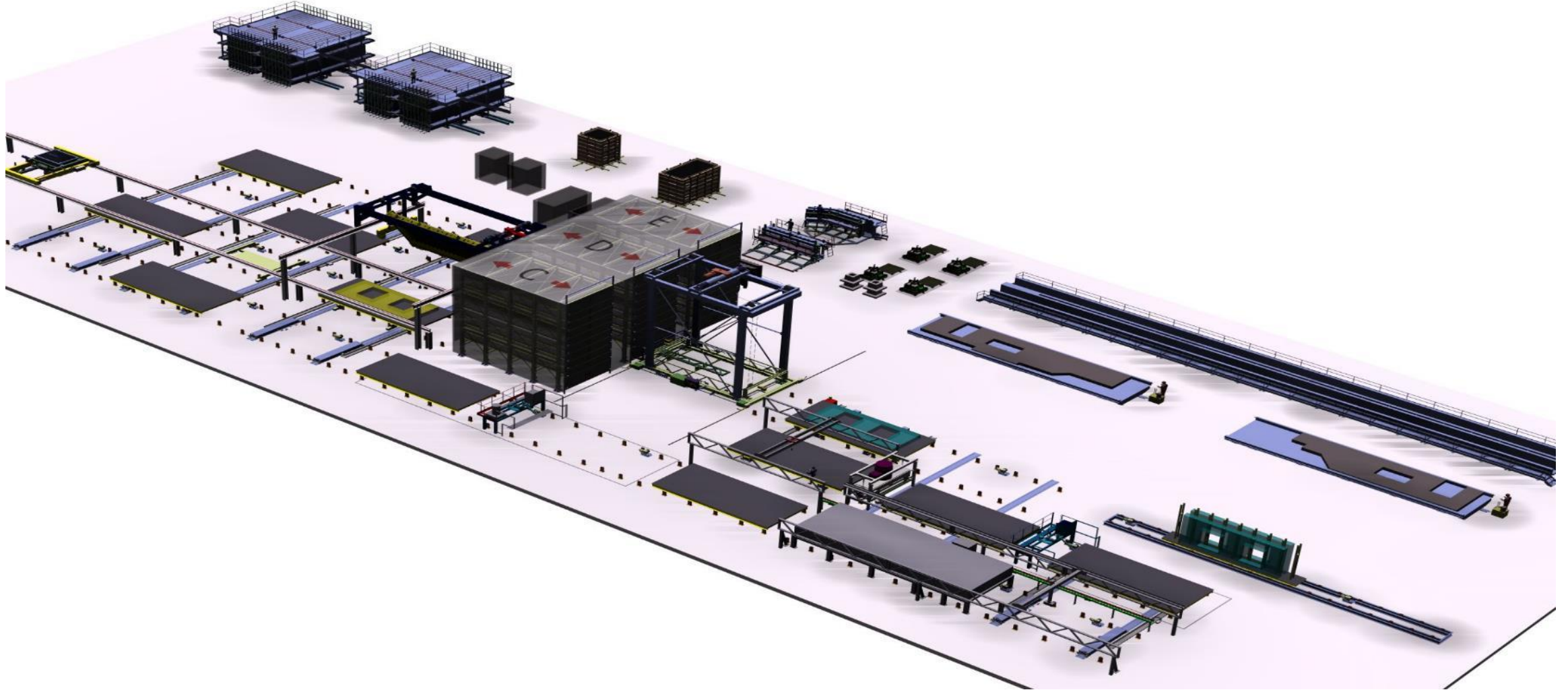
- 1) Feasibility Study
- 2) Project
- 3) Construction



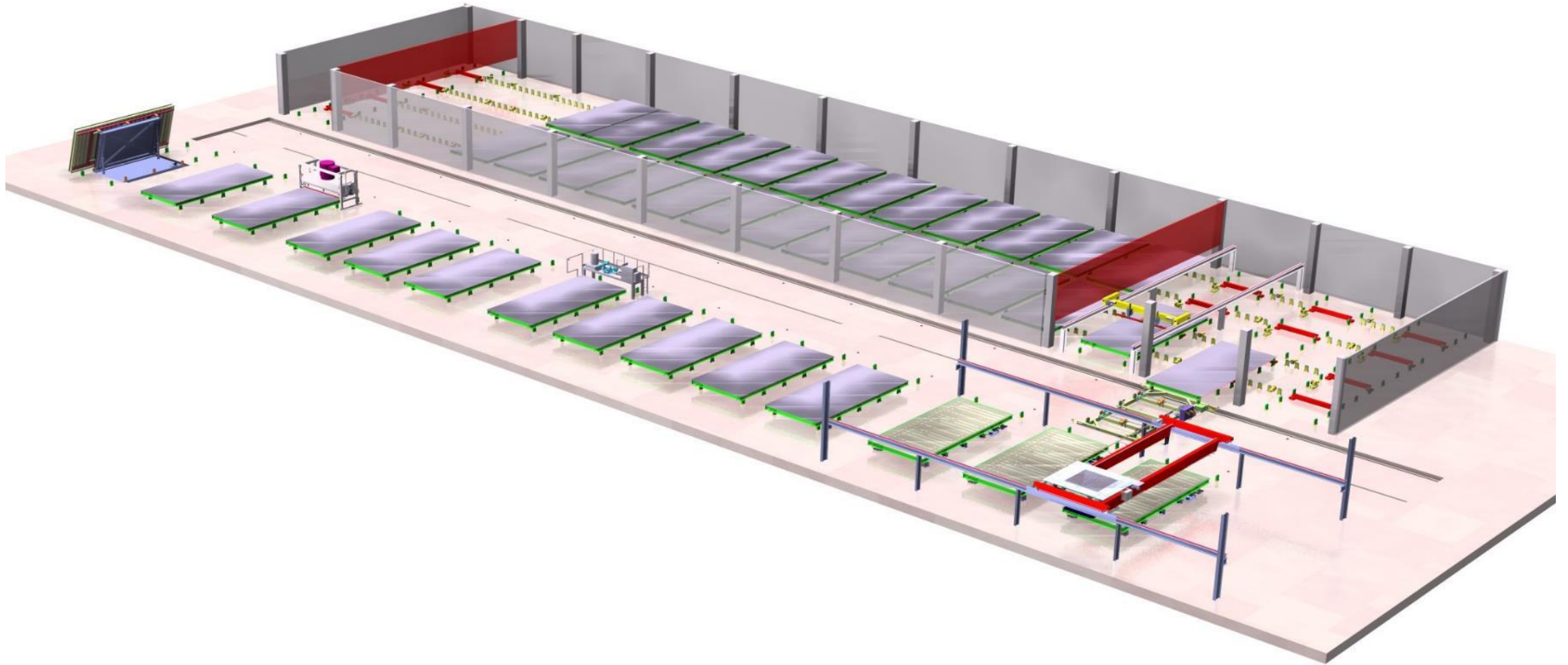
**BIANCHI**  
TECHNOLOGY FOR PRECAST



# PALLET CIRCULATION PLANT FOR FLOOR SLABS, DOUBLE WALLS, SANDWICH WALLS, SOLID WALLS OR FACADE PANELS



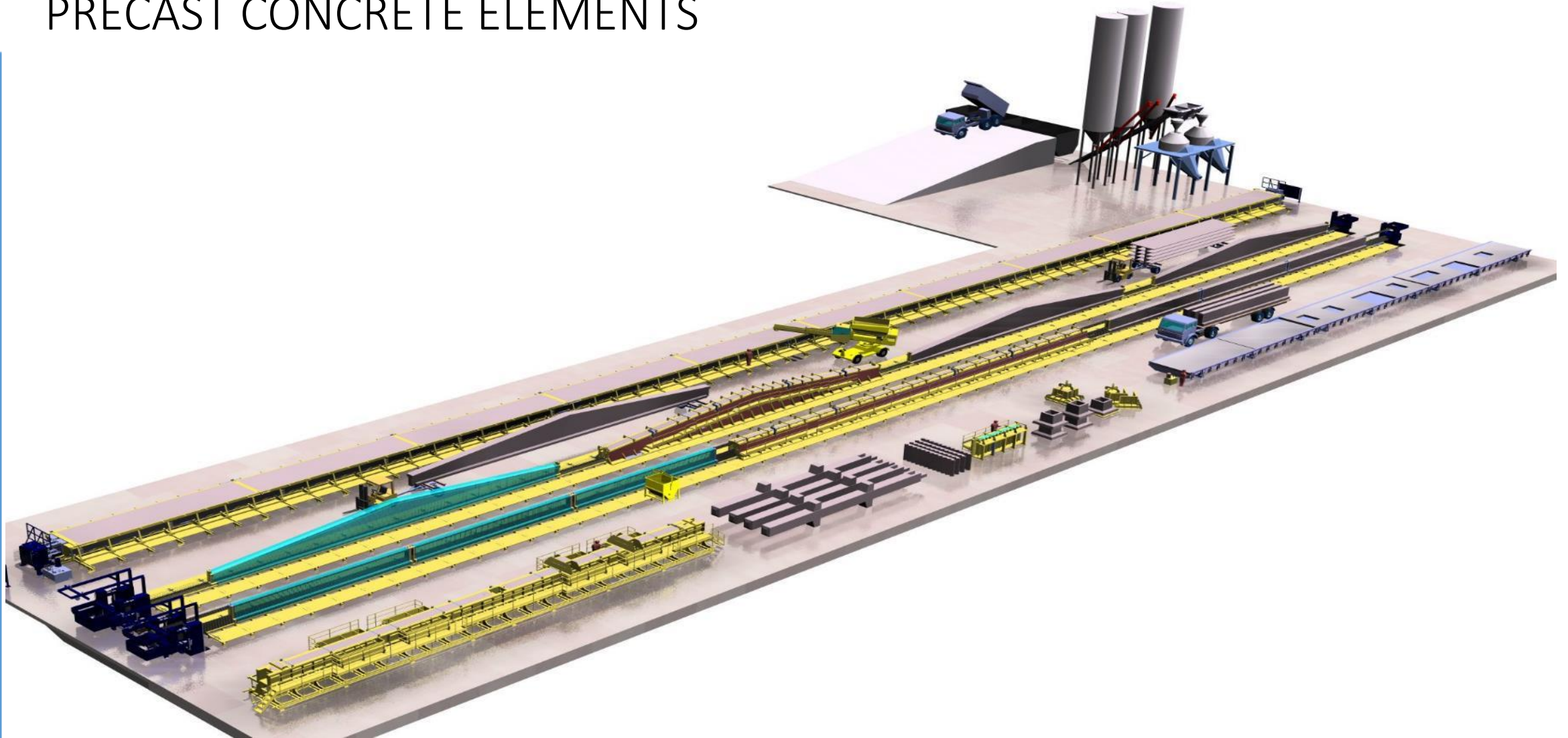
# PLANT WITH CENTRAL SHIFTER FOR FLOOR SLABS, SANDWICH WALLS, SOLID WALLS OR FACADE PANELS



**BIANCHI**  
TECHNOLOGY FOR PRECAST



# COMPLETE MOULDS PLANTS FOR THE PRODUCTION OF PRECAST CONCRETE ELEMENTS



**BIANCHI**  
TECHNOLOGY FOR PRECAST



## EXAMPLE: Production facility with complete range of moulds







# VERTICAL BATTERY MOULDS FOR PANELS

Vertical battery moulds for the production of panels, in single sided or double sided systems (1 or 2 series of cells).



**BIANCHI**  
TECHNOLOGY FOR PRECAST



# TABLES FOR PANELS PRODUCTION

Tables for the production of panels, fixed or tilting by hydraulic cylinders







# MOULDS FOR ROOFING SYSTEMS

Self-Reacting / Self-Stressing Moulds for TT, “Fly” elements, or beams







# MOULDS FOR BEAMS

## Pre-Stressed Beam Beds / Lines



**BIANCHI**  
TECHNOLOGY FOR PRECAST





# MOULDS FOR COLUMNS

Moulds for multi-storey columns, Battery Moulds for columns, moulds for plynths



**BIANCHI**  
TECHNOLOGY FOR PRECAST

# MOULDS FOR BRIDGES, ROADS OR VIADUCTS BEAMS

- Self reacting bridge beam moulds
- Prestressed bridge beams beds/lines
- Single or battery mould for crash barriers “New Jersey” type
- Pile moulds





# MODULAR HOUSING «MONOBLOCKS/PODS»

- Very flexible mould, that allows to produce residential modules of variable dimensions in height, length and width
- Once demoulded, the unit is moved to the finishing area, where all the concrete element movements are carried out by a completely automatic carousel system





# ELECTRICAL «MONOBLOCKS/PODS»

- External sides with manual or hydraulic movements
- Central core fixed or variable (collapsible for de-moulding)





## MOULDS FOR «BOOMERANG» ELEMENTS FOR AGRICULTURAL USE BUILDINGS



## MOULDS FOR AERATION ELEMENTS



**BIANCHI**  
TECHNOLOGY FOR PRECAST



## MOULDS FOR BOUNDARY WALLS



## MOULDS FOR STAIR ELEMENTS



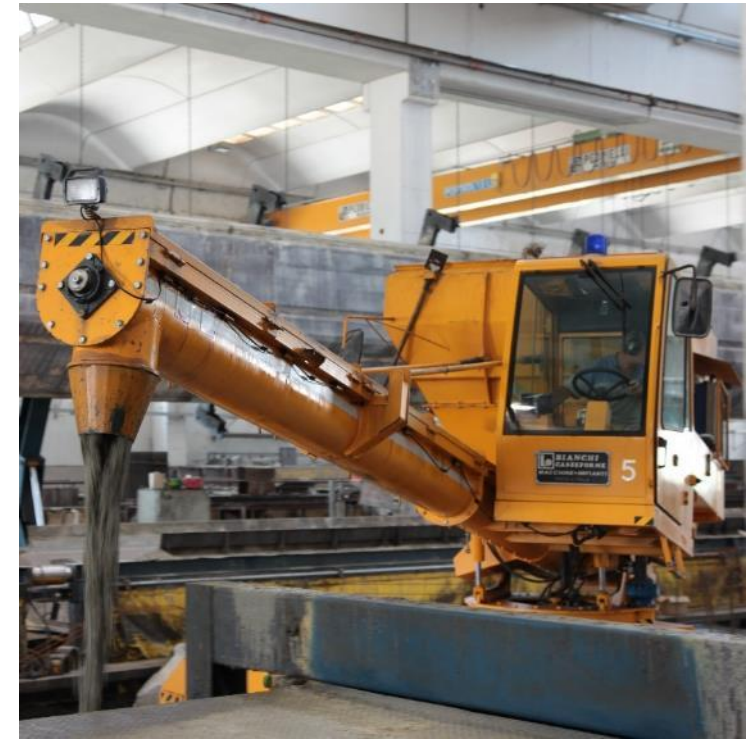
**BIANCHI**  
TECHNOLOGY FOR PRECAST



# CONCRETE DISTRIBUTION SOLUTIONS

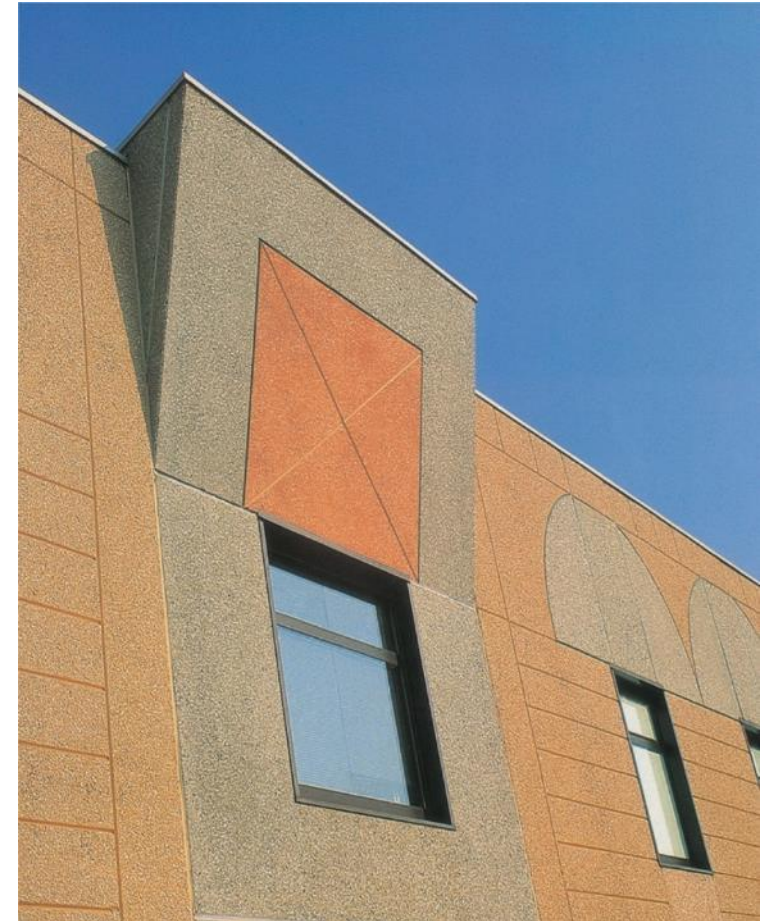


- Mobile vehicle for the transportation and distribution of concrete
  - Mod. Minibeton 2m<sup>3</sup> /2.6 yd<sup>3</sup>
  - Mod. Speedy 3-4m<sup>3</sup>/3.9-5.2 yd<sup>3</sup>
  - Mod. Maxibeton 6m<sup>3</sup>/7.8 yd<sup>3</sup>
- Concrete distributor
  - Mounted on cranes or on rails
  - Distribution either by means of augers or by hydraulically operated doors.



# PANEL WASHERS

For «exposed/washed aggregate» finish







# SERVICE EQUIPMENTS



*Lifting Beams for panels*



*Axels for elements transportation*



*Special Lifting Beams*



*Hydraulic/Manual opening bucket*



**BIANCHI**  
TECHNOLOGY FOR PRECAST

# ACCESSORIES



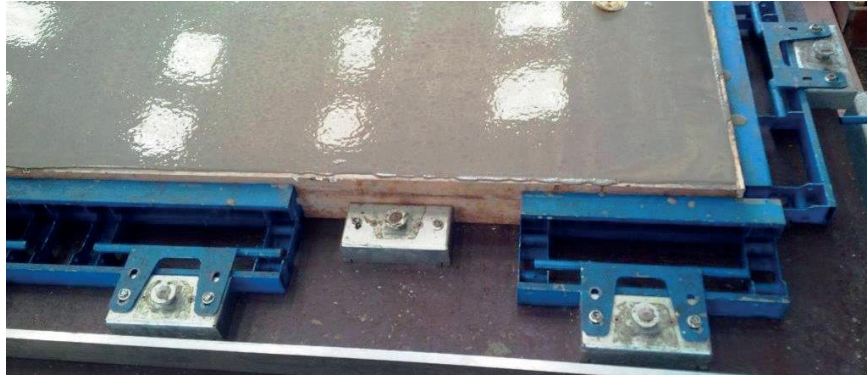
*Hydraulic pumps for stressing and relaxation of strand; barrels and wedges for strand.*



*Vibration systems, sliding, fixed, and pokers. Pneumatically or electrically operated.*



# ACCESSORIES



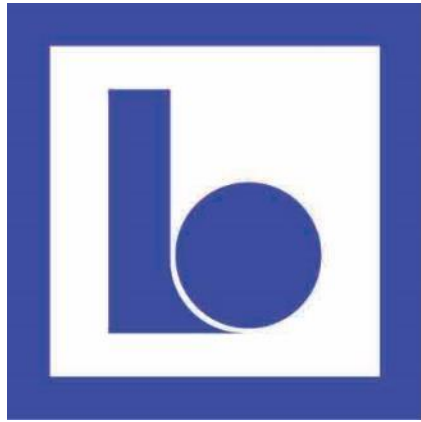
*Magnets and Side Shuttering*



*Lifting and fixing solutions for precast elements*



**BIANCHI**  
TECHNOLOGY FOR PRECAST



**BIANCHI**  
TECHNOLOGY FOR PRECAST

**Thank You!!!**



**BIANCHI**  
TECHNOLOGY FOR PRECAST